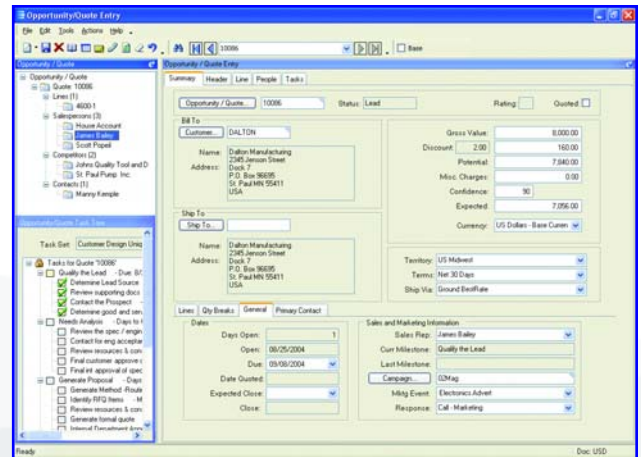


mobileConnect

CRM gives you control over your customer interactions: generating leads, developing opportunities and monitoring orders. CRM functionality is available from anywhere in the world. The mobileConnect series incorporates a disconnected database, enabling you to work anywhere you can take your laptop. Powered by the solid, fast SonicMQ® messaging engine, mobileConnect is comprised of three components: Sales mConnect, Sales Engineer mConnect and Hub mConnect. Vantage mobileConnect helps your sales representatives and sales engineers stay connected with their customers without requiring network connections.

SALES mCONNECT

- Generate new opportunities or fine tune existing quotations
- Create and complete workflow tasks
- Activate or process CRM calls
- Complete on-the-fly product configuration
- Add new customers and contacts
- Import customers and contacts
- Edit existing customer or contact information
- Produce marketing lists
- View business activity monitor queries
- Modify aging report formats
- Secure the system so users can view only sales information assigned to their territory
- Run the following reports:
 - Order backlog
 - Scheduled shipments
 - Aged receivables
 - Advance billing/deposit balance
 - Customer statements
 - Sales analysis
 - Sales gross margin
 - Quote form
 - Order form
 - Invoice form



Access critical customer information from anywhere in the world, without a network connection, to gain control over customer interactions.

- Access the following types of information from the Vantage tracker series:
 - Aged receivables
 - Quotes, orders, jobs, and parts
 - Customer data
 - Project information
 - Quantities on-hand
 - Time-phased balances
 - Customer and miscellaneous shipments
 - Returned material authorizations (RMAs)
 - Invoice information

SALES ENGINEER mCONNECT

All the functionality of Sales mConnect is included, plus the ability to engineer entire BOMs. Use drag-and-drop functionality to add subassemblies, operations and materials, or incorporate parts on-the-fly.

HUB mCONNECT

Configure your remote sales office server with Hub mConnect, and multiple mConnect users can access its database simultaneously. Individual mConnect users don't need to synchronize, because Hub mConnect does it all. And there's no downtime due to lost connections to a remote database.

SYNCHRONIZATION

mConnect provides full and light options for synchronizing your remote database with your primary Vantage database, ensuring data integrity and consistency, and fast and easy updates.

