

Supplier Relationship Management

Supplier Relationship Management (SRM) provides a tool for purchasing agents, or those providing quotes, to request quotes for raw materials or subcontract services from one or multiple vendors. Request for quotations (RFQs) are generated with one or more lines, each line having the ability to request pricing from one or more vendors.

Vendor RFQ responses automatically build or add to existing part price-break tables, with current effectivity dates to be used in other Vantage applications.

FLEXIBLE

Generate RFQs for raw materials or subcontract services. RFQs can include multiple lines or parts per RFQ with multiple vendors per line.

DATA MINING

Extract data based on any vendor attribute, including ISO certification, location or quality rating.

RFQ DECISION WIZARD

Filter and sort RFQ criteria based on your specific needs to find the best match for the needed materials. Sort criteria includes lead-time, price, quality rating, ISO certification, and on-hand inventory.

SUPPLIERS WORKBENCH

Give your supplier the ability to track RFQs and POs online.

VENDOR/PART

Maintain unique contacts and due dates for each vendor or part.

PARTIAL JOB QUOTES

Pull all or selected parts from a quote or job into an RFQ.

SEARCH CAPABILITY

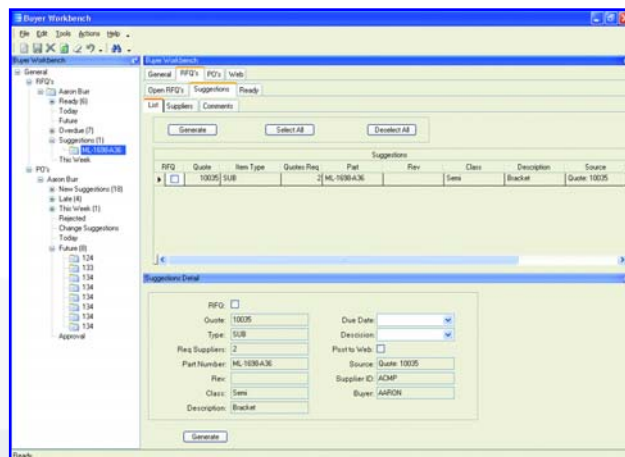
Perform a multiple-criteria search on open RFQs for instant tracking.

REVIEW WORKSHEET

Print an RFQ worksheet for easy review prior to vendor submittal.

E-MAIL INTEGRATION

Send and store e-mails related to a vendor, including RFQs, POs and corrective action notices.



Evaluate vendors based on historical performance from the buyer's workbench.

PART PRICE-BREAK TABLES

Vendor RFQ responses automatically build part price-break tables for use with other Vantage applications.

HISTORY REPORTS

Print history reports and view vendor price or part price history.

SUPPLIERCONNECT

Add crucial Web functionality to the SRM application with supplierConnect, which provides online access for your suppliers to:

- Bid on RFQs
- Receive POs
- Track RFQs, POs and inventory levels
- View scheduling information



5 Hill Street, PO Box 65 • Kitchener, ON, Canada • N2G 3X4
(O) 519-885-2040 • (F) 519-885-5674 • (TF) 866-565-3797



Worldwide Headquarters 18200 Von Karman Avenue, Suite 1000, Irvine, California 92612 USA
Phone: (949) 585-3700 Fax: (949) 585-4419 Visit our Web site at www.epicor.com