

# Quality Assurance

Tie together all quality functions, whether it's scrapping end parts, rejecting raw materials or tracking first article inspections. Inspectors have queues of items to inspect with full disposition and corrective action follow-up. Shop floor employees can flag parts as non-conformant, which moves them into an inspection queue. Parts that fail inspection may be flagged for review by a material review board.

## INSPECTION WORKBENCH

Monitor WIP, review all inspections in priority and automatically take action on those requirements from the inspection workbench. Inspectors move passed parts back to jobs and failed parts into discrepant material report (DMR) processing, or they simply scrap them.

## NON-CONFORMANT RECORDS

Create a non-conformant record (NCR) for all non-conformant parts. From a job, shop floor employees automatically create an NCR when they scrap an end part or raw material. Inventory personnel create an NCR when they scrap parts from inventory.

## NON-NETTABLE BINS

Use non-nettable bins to keep parts undergoing inspection or review out of current on-hand quantities.

## DISCREPANT MATERIAL REPORT PROCESSING

After failing inspection, create a DMR to provide the Material Review Board (MRB) with an online queue of parts that need to be dispositioned.

## CORRECTIVE ACTION

Create and track all preventive and corrective actions online. With due dates, audit sign-offs and unlimited comments, corrective actions provide for follow-up of quality issues.

## MATERIAL REVIEW BOARD

Disposition parts by an MRB after failing inspection. Online documentation provides an audit trail of MRB actions.

## COST OF QUALITY

Generate cost of quality reports to identify how much quality problems are costing you, whether parts are scrapped from inventory, a job or receipt inspection.

## PACKING SLIPS

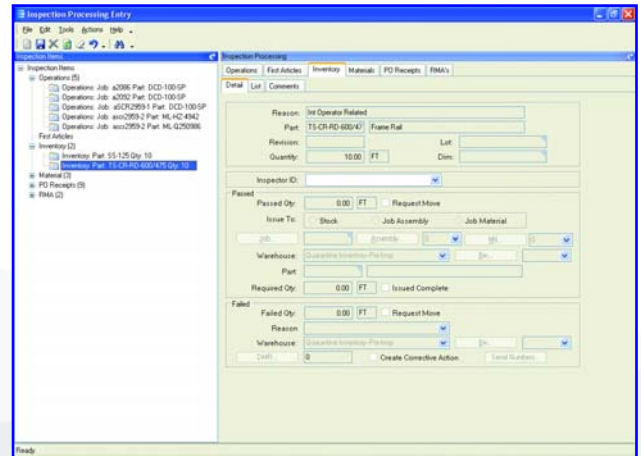
Print a customizable packing slip for all parts returned.

## DEBIT MEMOS

Create a debit memo in DMR processing and it is automatically tied to accounts payable.

## AUDIT TRAILS

View inventory transaction detail occurring in inspection and DMR processing with the material transaction detail report.



Record and track quality data to fulfill customer requirements and promote continuous improvement.

