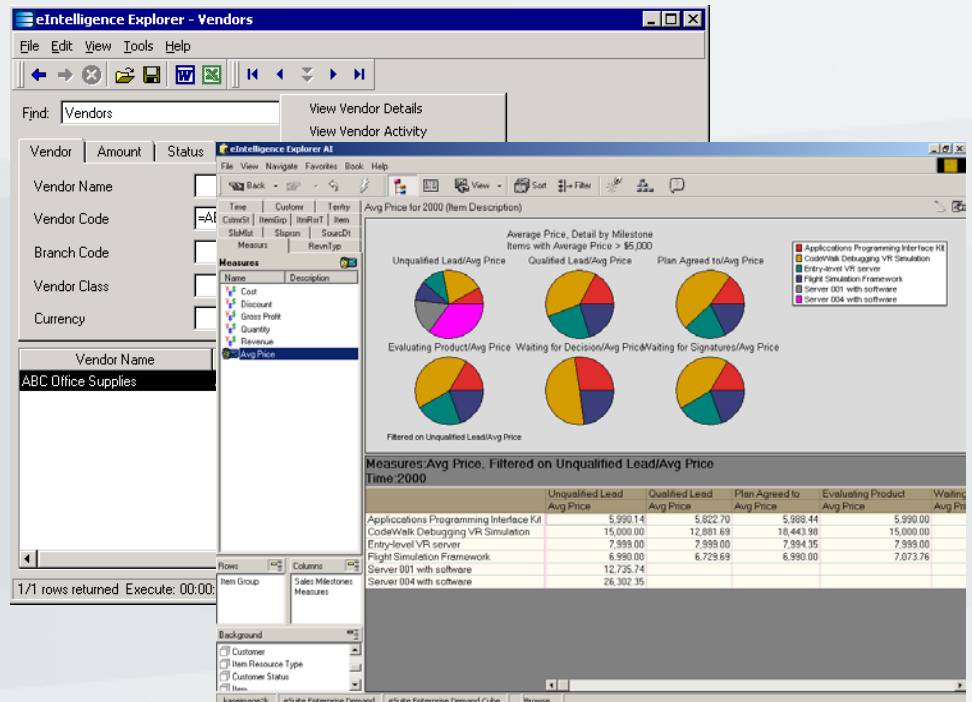


# Explorer and Explorer AI

Access and retrieve data to answer complex questions and solve business problems quickly.

Today, smart companies analyze a wealth of data to help them understand, plan and run their business more effectively. More than ever, rapid access to information is critical for success. Epicor Explorer provides an intuitive, powerful way to easily access, browse and act on data located anywhere within Epicor Enterprise. It bridges the gap between transactional and analytical systems. And from Explorer AI, the sophisticated viewer for Epicor DecisionStore analysis cubes, you can click to Epicor Explorer in context to dig into the related transactional data.

Epicor Explorer and Explorer AI are core components of the Epicor Enterprise Business Intelligence suite, which delivers sophisticated, integrated analysis, reporting, and inquiry capabilities to companies like yours.



Epicor Enterprise Business Intelligence Explorer and Explorer AI empower users to make informed business decisions. From ad hoc queries to sophisticated analytics, users make quick work of finding, understanding, and acting on their data.

Navigate, browse, and analyze data located anywhere within your Epicor Enterprise applications to make faster, better decisions and to rapidly exploit new opportunities.

### Navigate Easily with Rich Online Inquiry

Epicor Explorer provides a unified view of your business data. You can review data from your transactional applications, from anywhere, at anytime. Explorer gives you instant access to your business-critical data directly from a single interface. No report generations, drill-down sequences or manual steps are required. Just choose the information you're looking for and ask your questions. A powerful search engine will locate information based on your queries and provide logical navigation options based on the data context.

### Easy-to-Use Interface

Epicor Explorer's intuitive user interface masks complex underlying data environments, making navigation simple. Users can quickly navigate, isolate and understand their data without needing to know how or where that data is stored in the system. Employing a familiar Microsoft® Office look and feel, with interactive tips for when you need extra help, using Explorer is a snap for any Windows® user.

### Share Information for Greater Productivity

Integration with Microsoft Windows and Office products lets users easily share search results for greater productivity throughout the organization. As users refine searches by changing criteria on the fly, they can save their search definitions to create personal libraries of Epicor Explorer searches, which can be shared with other users. For immediate notification, search results or search definitions can be automatically e-mailed via Microsoft Outlook®.

### Microsoft Office Integration

Epicor Explorer is part of a complete solution based on Microsoft technologies that is tightly integrated with Microsoft Office for enhanced user productivity. Explorer's integration with Microsoft Office applications, such as Word, Excel and Outlook, lets you instantly publish search results in any way you choose for further collaboration and analysis.

### Bridging the Gap from Transactions to Analysis

Take Epicor Explorer to the next level with Explorer AI. Explorer AI provides OLAP (online analytical processing) capabilities to help understand performance and improve profitability, enabling multidimensional analysis of data in Epicor DecisionStore. Users can "slice and dice" data for sophisticated analysis and get visual "snapshots" for quick graphical representation of the data.

Epicor's OLAPlink™ technology lets users seamlessly navigate between OLAP and transactional data for an even deeper understanding of the business. While you're viewing OLAP data, Explorer maintains a contextual link of that information back to each Epicor Enterprise application source system. That means you can perform analytical and action-oriented activities that bridge the two separate data stores for greater value and faster decision making.

### Integrated OLAP Analysis Empowers Decision Makers

Key features of Microsoft Office and Microsoft SQL Server are incorporated in Explorer AI to provide advanced OLAP capabilities, including performance optimization and interactive OLAP publishing to Microsoft Office and SharePoint®. Users can also manipulate multidimensional data while disconnected from the corporate network using Microsoft offline analysis capabilities or via the Internet.

## DETAILED FEATURES

## DATA ACCESS AND NAVIGATION

- Rich online inquiry
- Single interface to browse data across all applications
- Over 70 predefined views of Epicor Enterprise data
- Drill-around capabilities
- Extensive user-definable search criteria
- Context-sensitive, data-driven navigation choices based on search results
- Automatically open and load appropriate entry forms, with search results directly from Explorer

## INTUITIVE INTERFACE

- Interface based on Windows Find Files or Folders utility
- Web browser-style forward and back buttons to browse current session's search results
- Access data with a single click

- ToolTips prompt users with search tips for more effective searches
- Right click on search results for context-sensitive navigation menu
- Option to preview SQL syntax prior to executing searches

## CUSTOMIZATION CAPABILITIES

- Add, modify and delete Epicor Explorer views with the View Designer
- Create custom data views based on unique business roles or processes
- Drag and drop fields to change search criteria
- Customize field labels for all search criteria fields and search result columns
- Hide, resize and apply masks to results fields to customize display of search results
- Create Epicor Explorer views

based on any table, view or stored procedure

- Add related navigation options to search results based on any business context

## MICROSOFT WINDOWS AND OFFICE INTEGRATION

- Access Epicor Explorer from the Windows Find... Menu
- Automatically save Explorer search definitions to the Epicor Enterprise Desktop
- Publish search results to Excel and Word
- Send search definitions or search results automatically via Microsoft Outlook

## INTEGRATED OLAP VIEWING

- Access to both OLTP (online transactional processing) and OLAP (online analytical processing) data through unique OLAPlink technology
- View OLAP data from the Epicor DecisionStore subject-specific DecisionMarts
- Predefined views of Epicor DecisionStore OLAP cubes
- "Slice and dice" data to explore data relationships
- Drag and drop to add and remove dimensions, measures and filters
- Toggle between tabular and chart views, including column, bar, line, pie and area chart types
- Navigate seamlessly between OLTP and OLAP data, retaining data context using OLAPlink

## Customize Your Data Views

Using the View Designer, you can quickly modify any existing Epicor Explorer views or add your own custom views. View Designer lets you drag and drop fields to create custom search criteria on the fly, and assign appropriate context-sensitive navigation options and actions. Views of Explorer AI can also be customized and saved, so you'll always see the data you want to see, presented the way you want it.

## An Intelligent Suite for a Smarter Enterprise

Epicor Explorer and Explorer AI are part of the Epicor Business Intelligence Suite, which gives you powerful capabilities for enterprise-wide data navigation, planning and forecasting, reporting, intelligent workflow, OLAP analysis and data warehousing.

## Put All Your Data at Your Fingertips

For more information on how Epicor Explorer and Explorer AI can help improve your business performance through instant data access, navigation and analysis, contact your authorized Epicor Partner, or call Epicor at 800-997-7528 (U.S. and Canada) or 949-585-3700 (international).



5 Hill Street, PO Box 65 • Kitchener, ON, Canada • N2G 3X4  
(O) 519-885-2040 • (F) 519-885-5674 • (TF) 866-565-3797



Worldwide Headquarters 18200 Von Karman Avenue, Suite 1000, Irvine, California 92612 USA  
Phone: (949) 585-3700 Fax: (949) 585-4419 Visit our Web site at [www.epicor.com](http://www.epicor.com)

