

Transparent, Secure Access for All Information Stakeholders

Epicor® Portal ends the game of relying on IT to anticipate, interpret and provide valuable business insight within an online Portal or reporting infrastructure. In short, Epicor Portal empowers the users who find value in the information they seek.

Epicor Portal is not about delivering a new portal architecture. It is about rich, compelling content on the leading portal infrastructure – Microsoft® SharePoint® Technologies. SharePoint has effectively commoditized portal infrastructure in the marketplace and lowered associated IT overhead. Epicor Portal adds value by producing SharePoint compatible Web Parts with role-based security and easy end-user authoring.

ROLES + ACCESS + SECURITY + PERSONALIZATION + SHAREPOINT = EPICOR PORTAL

Epicor Portal consists of two major components: the Epicor Administration Console, a Microsoft Management Console for maintaining roles and security settings for portal content consumers, and the Portal Server. These components interact with the application databases to create views, which can then be published to Microsoft SharePoint (either Windows SharePoint Services or SharePoint Portal Server), or exported to a variety of other formats, such as a Microsoft Excel® spreadsheet or XML.

Secure portal access to information across Epicor applications is only the first step. Data discovery and data visualization within SharePoint Web Parts empower information workers to build and share key performance indicators in addition to add-hoc online queries. Subsequent content packs (future product enhancements) differentiate Epicor Portal further by encapsulating business processes, workflow, alerting, and transactions into specialized SharePoint Web Parts. Epicor Portal will then become an extension of the application.

Reduced IT Burden Using Standardized Portal Infrastructure

Epicor Portal leverages SharePoint Products and Technologies, the leading portal infrastructure, to provide a secure and collaborative portal environment. In turn, Epicor Portal provides content as SharePoint Web Parts with role-based security and straightforward end-user authoring. With more than 40 million seats of SharePoint Portal Server sold since its release, SharePoint Products and Technologies offers rapid deployment, can be implemented with limited or no support, and presents a competitive price point – all critical features for midmarket companies. In addition to SharePoint Portal Server, Epicor Portal integrates just as easily with SharePoint Services, which is available from Microsoft as a download for Microsoft Windows Server™ 2003 at no additional cost. This added option allows Epicor customers to either leverage existing SharePoint infrastructure or add SharePoint at a very low entry price.

Information Discovery, Visualization and Collaboration

Epicor Portal moves the portal platform beyond development hands and into the organization for collaboration and knowledge sharing between people, departments, and divisions. Epicor Portal incorporates outside entities such as partners and customers to form new collaborative initiatives and expand business opportunities using the Microsoft SharePoint Portal Server External Connector.



DETAILED FEATURES

MICROSOFT SHAREPOINT

SharePoint Technologies (SharePoint Services and SharePoint Portal Server) provides the portal framework.

SHAREPOINT WEB PARTS

Epicor Web Parts within SharePoint can be linked together using the standard SharePoint publication and subscription process to deliver interactive and dynamic content.

SECURE ACCESS TO MULTIPLE PRODUCT LINES

Epicor Portal enables transparent secure interaction of Epicor applications across product lines.

END-USER DISCOVERY

Epicor Portal moves the portal platform beyond development hands and into the organization for collaboration and knowledge sharing between people, departments, divisions, customers, partners and suppliers.

DATA VISUALIZATION

Epicor Portal can easily publish information to Microsoft Office Web Parts and Components within SharePoint for viewing information within pivot tables, charts, and spreadsheets.

METADATA DRIVEN

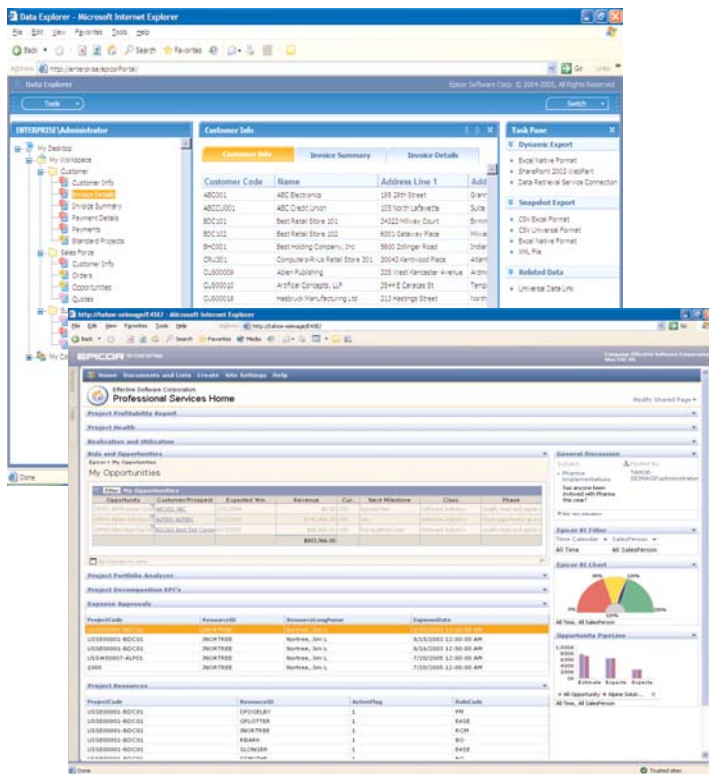
Schema defines data relationships, role-based security, the physical data structure of the data domain and identifies the relationships between various database tables.

VIEW BUILDER

A personal workspace for organizing, viewing, and creating data views.

DATA PROVIDER

XML queries defined by the View Builder are translated into appropriate syntax for the application database - either SQL or Progress.



Users access Epicor Portal either through the Epicor Portal Explorer or through published Web Part libraries within Microsoft SharePoint. Portal Explorer is a personalized work space to build, edit, preview, and export data views. Creating personal views of the business or a Key Performance Indicator (KPI) within the Portal Explorer is a simple step-by-step wizard process starting with a view definition and selection of which Epicor application to access. Simply pick what data you want to view. There is no need to know where or how the data is formed, and multiple company databases can even be combined into one view. Related business documents and fields automatically display based on the type of data selected. Filters and prompts can be added through the wizard to focus on information that is important by creating default ranges such as dates or customer types. Or, the prompt values can be modified at anytime when the data is viewed within the portal. Portal Explorer runs within Microsoft Internet Explorer and can be accessed from any computer that can connect to the portal server.

System Requirements

PROCESSOR

- Pentium® 4 class or better; Dual processors recommended

MEMORY

- 512 MB of RAM required; 1 GB or more recommended

SERVER SYSTEM

- Windows 2003 Server Enterprise Service Pack 1
- Windows SharePoint Services 2.0 or Microsoft SharePoint Portal Server 2003
- Microsoft SQL Server 2000 with Service Pack 4
- Microsoft Internet Information Server (IIS) 6.0



Worldwide Headquarters 18200 Von Karman Avenue, Suite 1000, Irvine, California 92612 USA
 Phone: +1 949 585-3700 Fax: +1 949 585-4419 Visit our Web site at www.epicor.com

